

LGB documents provided courtesy of:

TRAINLI

You can find everything you need for your hobby at

[Click Here >>>](#) www.trainli.com

+1 (775) 302-8011

[Say thank you and like us on Facebook](#)

<https://www.facebook.com/trainlipage/>

Bedienungsanleitung

Instruction

Instructions de Service

67403

LGB-Patent-Kugel-lagerradsätze

in denen jedes Rad einzeln in einem Kugellager läuft. Mit Kontakzapfen und Stecker für Lichtanschluss. Sehr geringer Rollwiderstand, der das Fahren langer beleuchteter Züge erlaubt. Nachrüstung von Innenbeleuchtungen nur noch leichter ausführbar. **Nicht inklusiv.**

30670



30680

(USA) LGB Patented

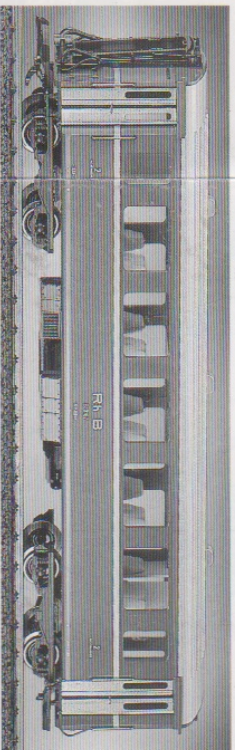
Ball Bearing Wheel Sets

Ball bearings in each wheel decrease wheel friction and increase pulling capacity. Perfect for heavy rolling stock and long trains. Includes integral electrical contacts and connections for easy lighting hook-ups. Fit most LGB rolling stock. **Not included.**

31670

(F) 67403 Paire d'essieux métalliques à roulement à billes (patente LGB).

Par les goupilles de contact et des fiches, ces essieux assurent la prise de courant pour l'éclairage. Leur très faible résistance au roulement permet de faire circuler de longs convois éclairés. Ce dispositif simplifie aussi l'installation ultérieure de l'éclairage. **Frz.: Nicht inklusiv.**



30670/69 1195 5



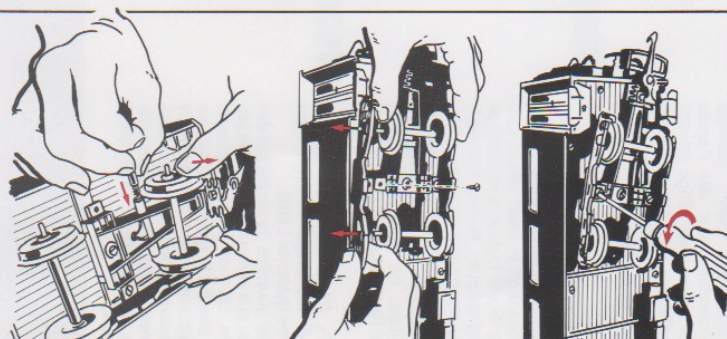
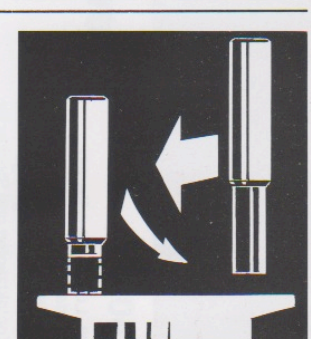
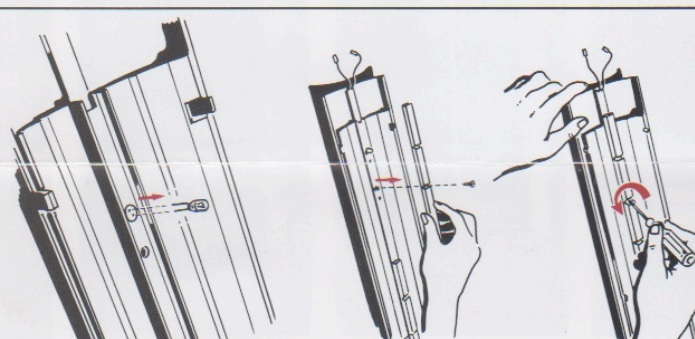
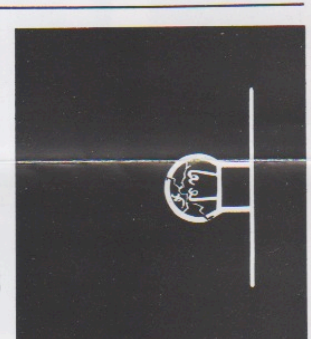
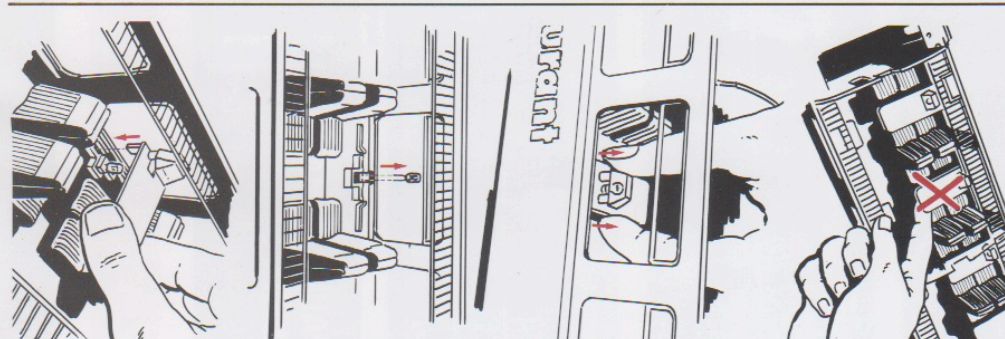
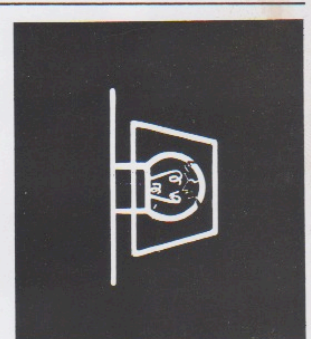
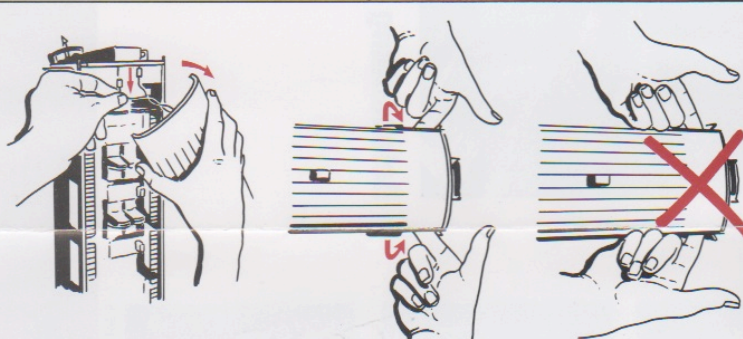
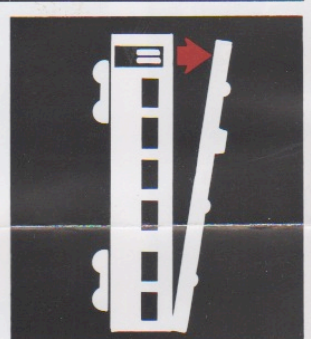
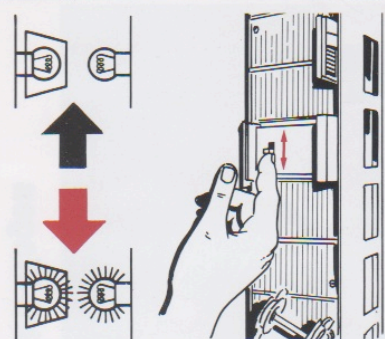
Beleuchtung RhB-Wagen

ERNST PAUL LEHMANN
PATENTWERK

Saganer Str. 1-5 · D-90475 Nürnberg

made in Germany





50511
(5051/1)
LGB Service

